



TK International  
020 7794 8700  
www.t-k.co.uk

Residential Sales  
Residential Lettings  
Property Management

Sales Office:  
9 Heath Street  
Hampstead  
London NW3 6TP  
E: sales@t-k.co.uk

Lettings Office:  
16-18 Heath Street  
Hampstead  
London NW3 6TE  
E: lettings@t-k.co.uk

tk.international  
TK International  
TK International

Est.  
1998



## Prince Arthur Road Hampstead Village NW3

Set over the first and second floors of an attractive detached residence in a prime Hampstead Village address is this bright and spacious two/three bedroom duplex apartment with a c. 19' private terrace and the enviable benefit of designated off street parking for one car.

This immaculately presented apartment spans approx. 1,300 sq ft and comprises well laid out generous living/entertaining space including a 23'3" x 16'1" reception/dining room and a separate kitchen/breakfast room.

A particularly desirable and uncommon feature for a first floor flat is the private terrace, which is directly accessible from the apartment's main hallway and offers a wonderful spot for a morning coffee or al fresco dining and entertaining.

Prince Arthur Road is a quiet and highly coveted residential road situated in the heart of Hampstead Village with the many popular boutiques, galleries, coffee shops and eateries Hampstead has to offer in addition to Hampstead Underground Station (Northern Line). The open spaces of Hampstead Heath are also located within walking distance.

**£1,650,000**

**SOLE AGENT**

**Leasehold**









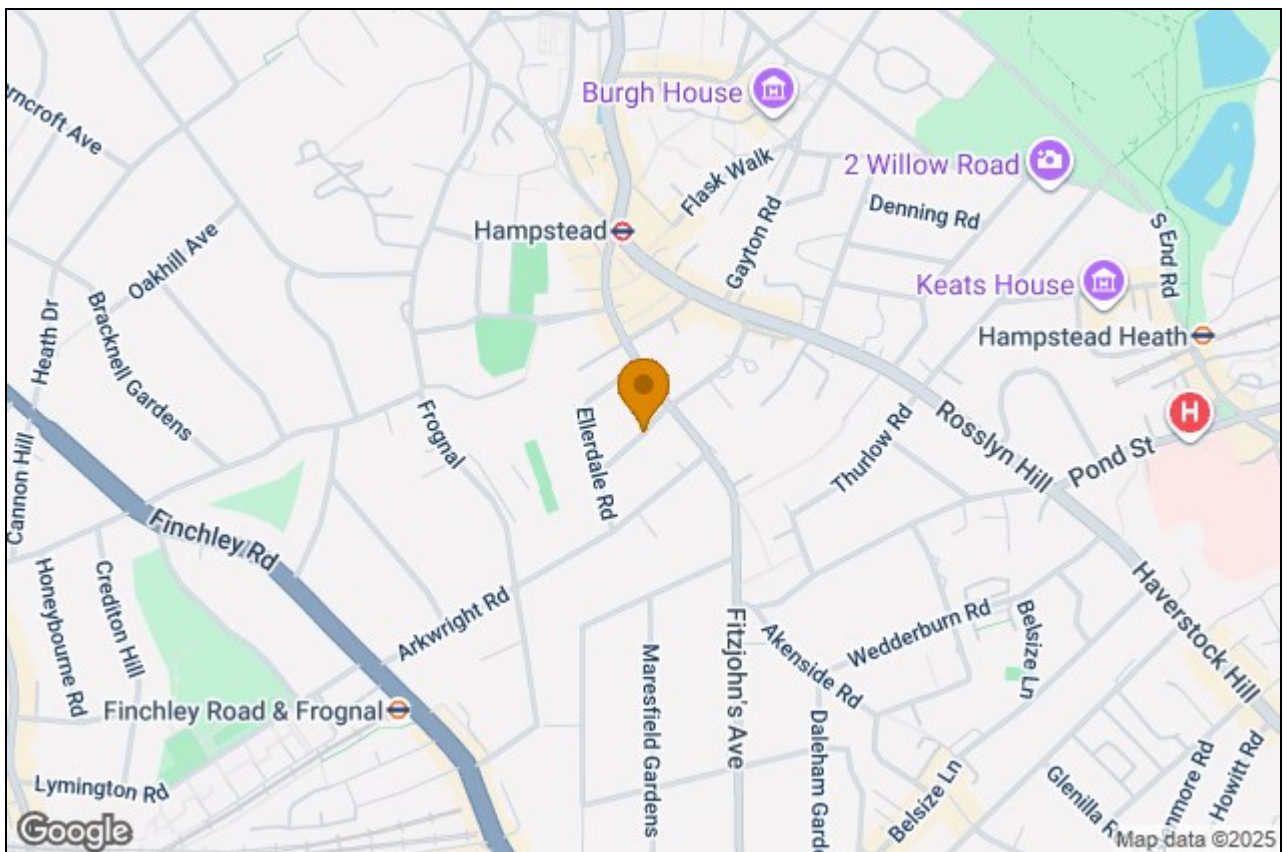














# Prince Arthur Road, Hampstead Village, NW3

Approximate Area = 1271 sq ft / 118 sq m

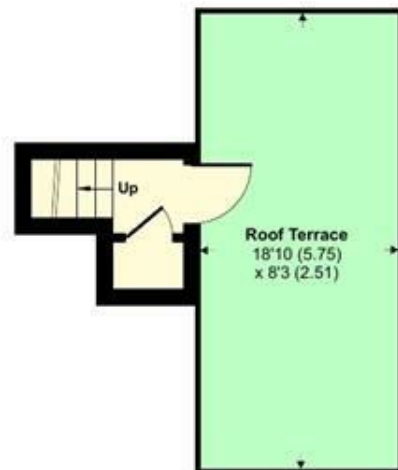
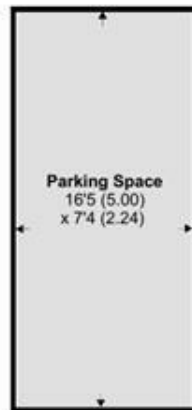
Limited Use Area(s) = 57 sq ft / 5.2 sq m

Total = 1328 sq ft / 123.2 sq m

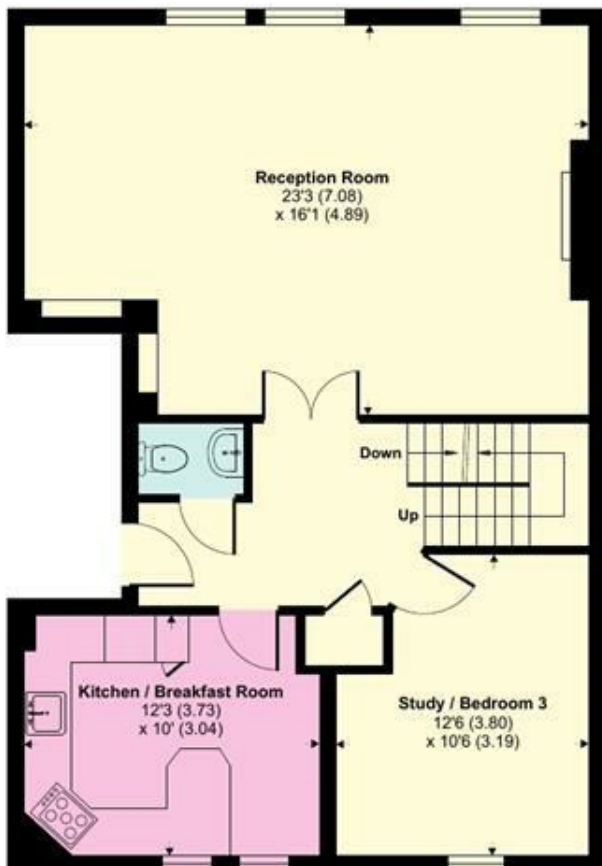
For identification only - Not to scale



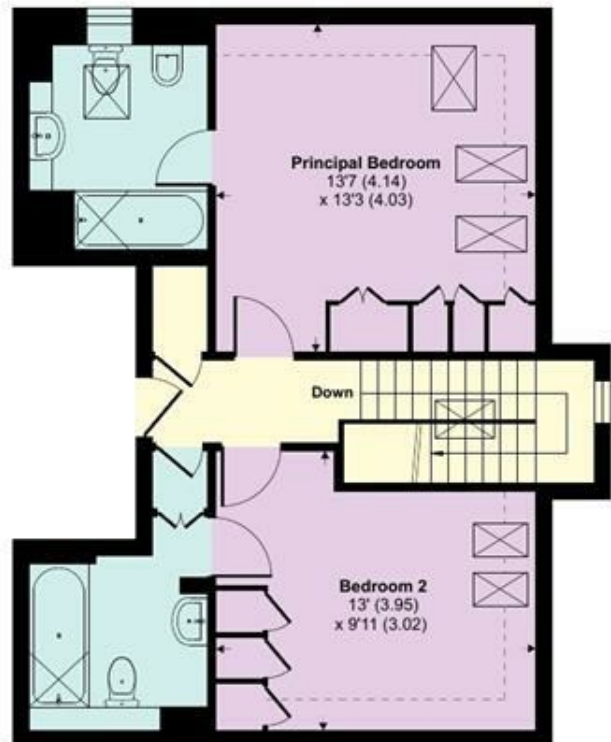
Denotes restricted  
head height



UPPER GROUND FLOOR



FIRST FLOOR



SECOND FLOOR



Floor plan produced in accordance with RICS Property Measurement 2nd Edition,  
Incorporating International Property Measurement Standards (IPMS2 Residential). © nichecom 2025.  
Produced for TK (Hampstead) Ltd. REF: 1358919